



Scan for more information

PA-07

User Manual

Table of Contents

Specifications.....	3
Dimensions.....	4
Speed/Current vs Load.....	5
Mounting Brackets.....	6
Internal Components.....	7
Internal Descriptions.....	8

Have any queries? Our expert engineers are here to help!



sales@progressiveautomations.com



1-800-676-6123



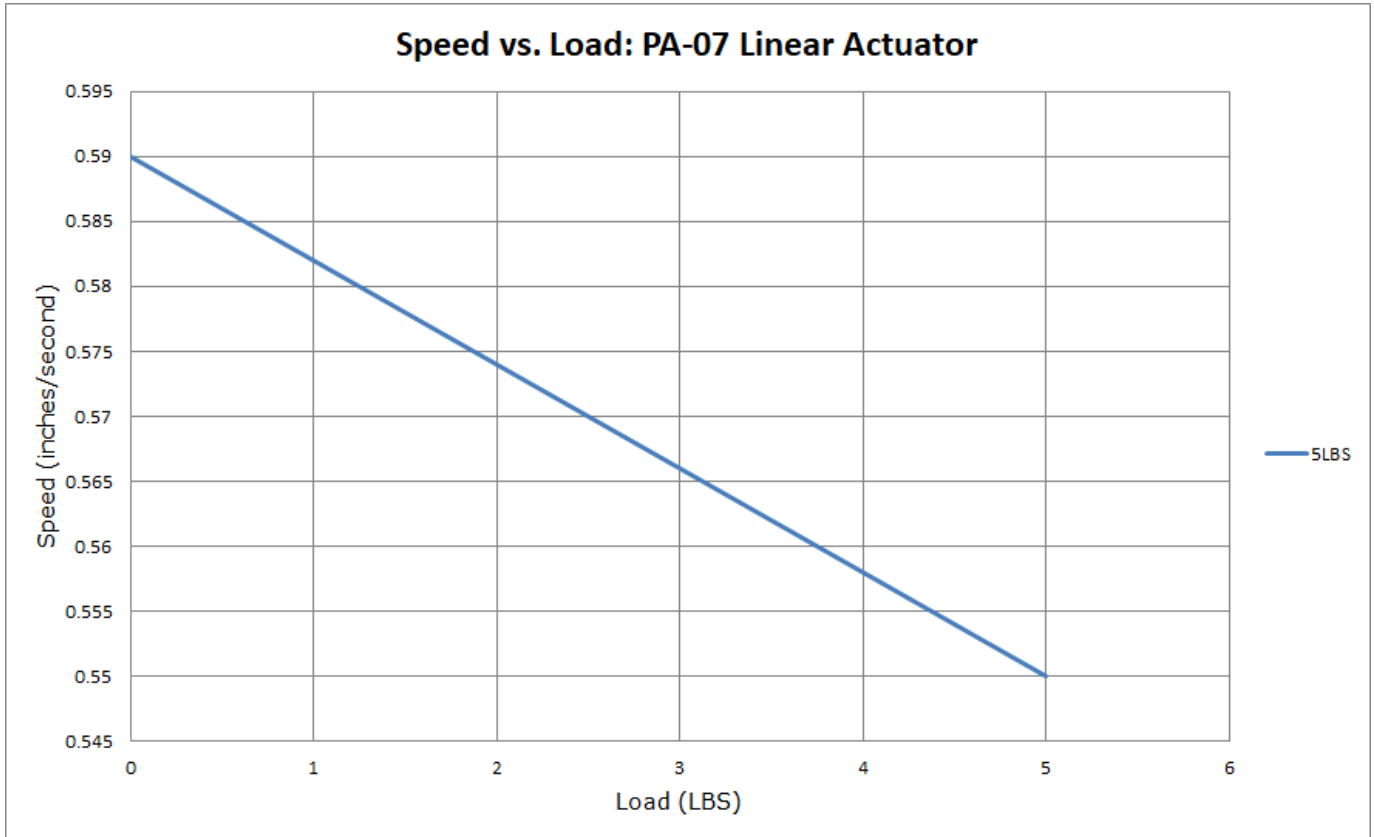
progressiveautomations.com

Specifications

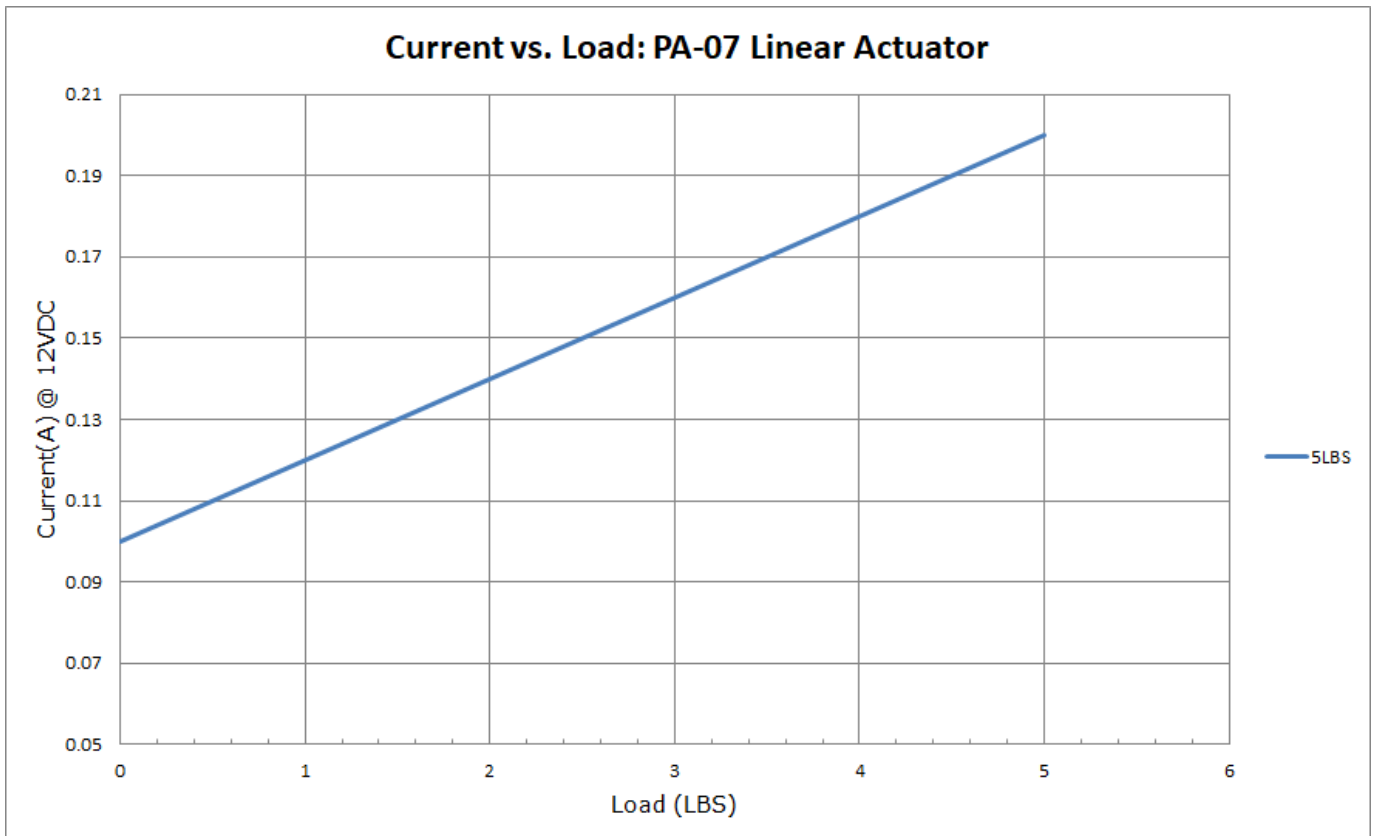
Load (LBS)		No Load Current (A)	Full Load Current (A)	Speed (inch/sec)	
Dynamic	Static	12VDC	12VDC	No Load	Full Load
5	6.5	0.1	0.2	0.59	0.55

Input Voltage	12VDC
Stroke	0.5" to 12"
Feedback	No
Duty Cycle	10% to 20%
Weather Protection	IP66
Overload Protection	Yes (7 lbs - may vary on application or control)
Operational Temperature	0°C to 50°C (32°F to 122°F)
Operating Noise	<45 dBA
Limit Switch	None
Cable Length	8"
Connector	Tinned Wire Leads
Front Mounting Hole Size Rear	0.16"
Mounting Hole Size Actuator	0.16"
Type	Micro
Motor Type	Brushed DC Motor
Screw Type	ACME
Stroke Rod Material	Stainless Steel 301
Housing Material	Polyamide 66
Gear Material	Powder Metallurgy/Steel Alloy
Compatible Mounting Brackets	BRK-07
Warranty	18 Months

Speed vs Load



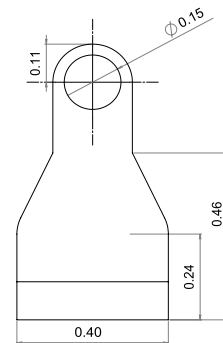
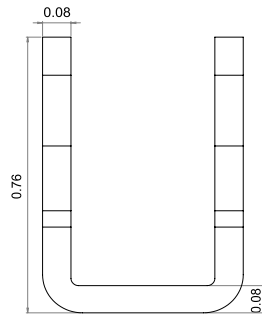
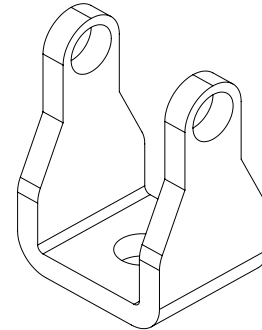
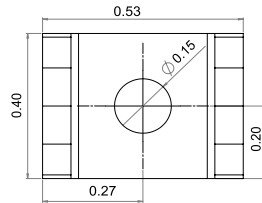
Current vs Load



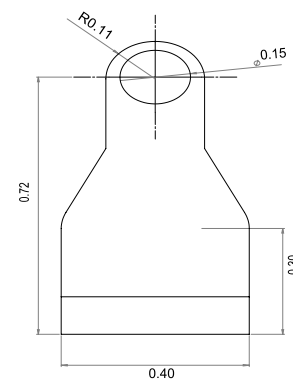
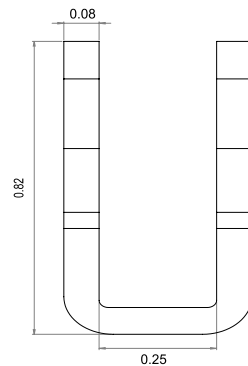
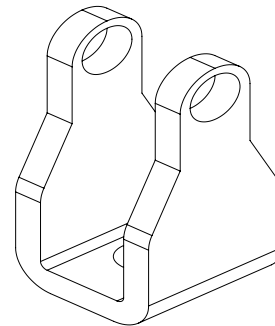
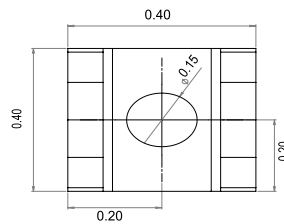
Mounting Brackets

(Dimensions in inches)

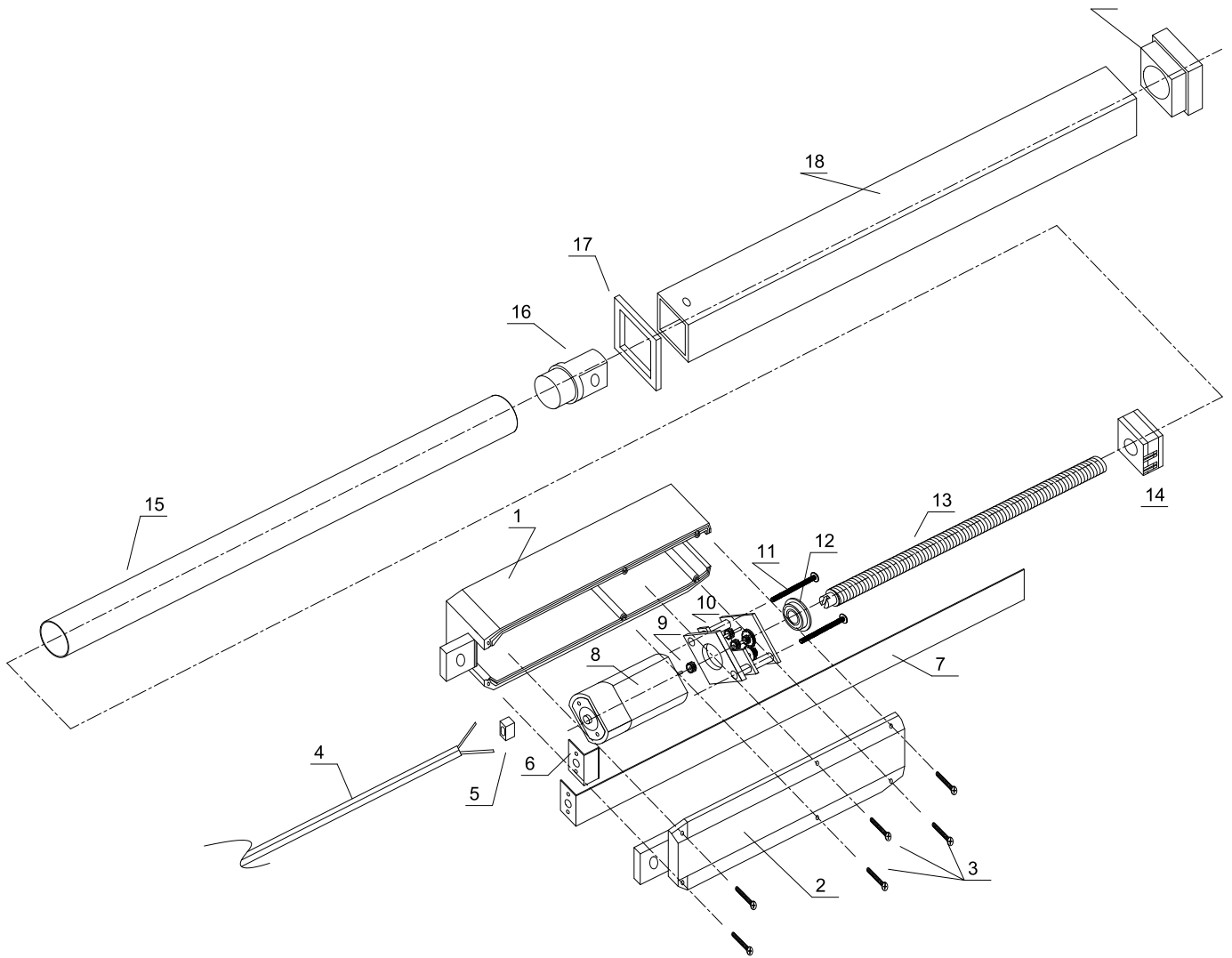
BRK-07- Motor End



BRK-07 - Stroke End



Internal Components



Internal Descriptions

Item	Description	Qty
1	Actuator Bottom Case	1
2	Actuator Upper Case	1
3	Actuator Case Screw	6
4	Power Cable	1
5	Power Cable Grommet	1
6	Padding	1
7	Limit Switch Bar with Diodes	1
8	Electric Motor	1
9	Drive Gear	1
10	Gear Box	1

Item	Description	Qty
11	Gear Box Screw	2
12	Shaft Bearing	1
13	Treaded Shaft Drive	1
14	Limit Contacts	1
15	Shaft	1
16	Shaft Cap with Mounting Hole	1
17	Shaft Case Gasket	1
18	Shaft Case	1
19	Shaft Case Top Cap	1